



612 East Grace St., Suite 401
Richmond, Virginia 23219

ph 804.788.4717 fax 804.788.1541
www.richmondsymphony.com

Philip H. Bennett, Chair
David J.L. Fisk, Executive Director

3rd/2nd Horn Audition Repertoire – April 2015

SOLO

Mozart Concerto No. 4 1st Movement, Exposition

SECOND HORN

Beethoven Fidelio, Overture* mm. 1 – 8
mm. 45 - 55

Beethoven Piano Concerto No. 5* 1st movement: 14 m. before reh. B – 6 m. before reh. B.

Beethoven Symphony No. 3 Scherzo: Trio, mm. 171 - 205

Beethoven Symphony No. 7* 1st movement: mm. 84-110
3rd movement: mm. 445-498

Beethoven Symphony No. 8* 3rd movement: mm. 36-78

Shostakovich Symphony No. 5 1st movement: reh. 17 - reh. 21

Strauss Ein Heldenleben 4 mm. after reh. #3 - 2 mm. after reh. #5

THIRD HORN

Berlioz Romeo & Juliet Queen Mab Scherzo: reh. 58 - 15 mm. after reh. 59

Brahms Piano Concerto No. 1 1st movement: mm. 199 - 215

Brahms Piano Concerto No. 2 1st movement: 17 before reh. G. - 7 before reh. G.
2nd movement: mm. 159 - 215

Brahms Symphony No. 4 1st movement: mm. 50 - 79
mm. 168 - 213

Dvorak Symphony No. 9 1st movement: mm. 16-27

Mahler Symphony No. 3 1st movement: pickup to reh. 29 – 2 mm after 31

Mendelssohn Symphony No. 3 2nd movement: mm. 48 - 67
mm. 181 - 223
3rd movement: mm. 74 - 95

Strauss Till Eulenspiegel 13 m. before reh. 29 - reh. 30

POSSIBLE SECTION ROUND (Finals only)

Mozart from *Selected Duets for French Horn*, Volume II (ed. H. Voxman)
#2, Andante (both parts, no repeats)

* - excerpts marked with an asterisk may be asked for in a section round

Sight reading and trial period also possible.

Ludwig van Beethoven
Fidelio Overture, Op. 72

CORNO II in E

ex. 1

Allegro

Adagio solo

1

11

Allegro

Adagio solo

12

32

cresc.

p

5

47

Allegro solo

cresc. p dolce

4

61

cresc.

f

72

sf

sf

p

85

2

p cresc.

f

98

1 1

sf sf sf

111

sf sf sf

17

136

solo 1 2 3 4 5 6 7

p

143

cresc.

solo

p

152

1 2 3 4 5 6 7

cresc.

f

166

sf sf

179

solo C

p

3

Concerto for Piano no. 5

Horn II

in Es.

Ludwig van Beethoven

Allegro.

Tutti.

1 *ff* *ff* *ff* *a tempo* *f* *sf*

1 *sf* *p* *f* *f=p* *f* *sf* *sf* *sf* *sf* **A**

6 *pp* *solo* *dolce*

1 *pp* *cresc.* **B**

2 *p dol.* *cresc.* *f*

C *ff* *sf* *sf* *p*

Solo. *cresc.* *dim.*

13 *p* **D** *Tutti.* *f* *Solo.* *f* **E** *Tutti.*

14 *ten.* *sf* *ten.* *sf* *Solo.*

15

BEETHOVEN SYM. 3

Horn II

in Es **SCHERZO**
Allegro vivace (♩ = 116)

24 Viol. I 45 Viol. I Fag. I

6 Fag. I, Kl. I A 1 2 3 4 5 6 7

105 1 2 3 4 5 3 p

121 B 5 Ve. 1 p

140 Viol. I 5 p cresc.

158 1. 1 2. f f f f f f

171 TRIO sf cresc.

182 f sf

194 cresc. f f 18

224 Viola Bässe Viola Bässe sf cresc.

238 sf sf 3 3

255 1. 2. Viol. I 25 sf pp f pp

294 47 Viol. I Fag. I 6 Fag. I, Kl. I

Symphony no. 7

Horn II

Ludwig van Beethoven

in A

Poco sostenuto $\text{♩} = 69$

1 *f* 1 *f* 1 *fp* *fp* *dim.* *pp* 3 *p cresc.*

15 *ff* *p* **A** 9 Viol.I 1 2 3 4 *ff sf sf sf sf sf sf sf*

38 5 6 7 8 **B** 1 7 *sf sf sf sf sf sf dim. p* Fag. *cresc. ff ff*

63 *Vivace* $\text{♩} = 104$ 1 2 3 4 5 6 1 2 3 4 5 *Fag. I Fag. III cresc. p*

79 6 *f p f sf sf sf sf sf sf ff*

91 *ff*

100 1 2 3 4 5 6 7 8 **C** 7 Viol.I *p cresc. ff*

120 2 *dolce*

132 **D** 11 Fag. I Ob. I Fag. II *f*

151 **E** 2 2 *Fag. I Fag. II ff ff*

165 2 *ff* G.P.

177 2 14 **F** *ff ff*

207 **G** 13 Ob. I

Beethoven — Symphony No. 7, MVT 3

Corno II

IND.

445 1 2 3 4 5 6 7

p dolce

459 8 9

cresc.

471 1

ff *fp*

487 1

sempre dim.

501 **Presto** 9 Viol. I

f *p* *f*

524 16 Cor. I 12 Fag 25 Viol. I **D**

ff *ff* *f*

590 24 Viol. I 1

ff *f*

628 1 1 1 3

644 **CODA** 3 **Assai meno presto** **Presto**

p dolce *ff*

in A
Allegro con brio $\text{♩} = 72$

1 1 1 2 3 4 5 6 7 1.

ff *G.P.* *G.P.* *sf* *sf* *sf* *sf* *sf* *sf* *sf*

13 2. 1. 2.

23 *ff*

33 **A** 8

ff

BEETHOVEN, SYM. 0 - MVI. III

Corno II

in F

Tempo di Menuetto ♩ = 126

Tr. *p* *cresc.* *f* *sf* *sf* 1 1. 2. 1

sf *sf* *sf* *sf* *sf* *sf* *sf* *sf* *fp* *dim.*

21 *pp* *cresc.* *f*

Viol. I

32 *ff* *sf* *sf* *sf*

Viol. I

12 *sf* *f* *f* *Fine* *dolce* *cresc. p* *cresc.*

Solo

51 *p* *p* *cresc.*

Cor. I

f *p dolce cresc.* *p* *cresc.* *p* *cresc.*

p *p* *dim.* *pp* Men. da Capo al Fine

in F

Viol. I

Allegro vivace ♩ = 84

12 *ppp* *sempre ff*

sf *sf* 10

Cor. I *f* Viol. I

Symphony no. 5

Horn II in F

I

Dmitri Shostakovich

Moderato

5 1 6 2 6 3 6 4 7 5 3 6 3

espress. dim. p

7 1 8

cresc. f

1 9 9 10 7 11 7 12 10

f p

13 10 14 V-ni I 2 5 15 8 16 6 17 2

p ff dim p

18

f

poco animando

19

mp

20 1 21 6

f ff

Allegro non troppo

22 2

f

23 2 24

ff

4 25 3

f

Ein Heldenleben

Horn II

Richard Strauss

in F.
Lebhaft bewegt.

8 1 1 1

f *f* *mf espr. cresc.*

3 2 8 3 3

4 *dim. p cresc.*

3 5 5 6 9 7 1

mf *ff* *mf*

8 5 9 *mf marcato* *mf cresc. f* *mf cresc.* *f*

1 10 *mf* *mf* *fff*

2 11 2 *fff*

1 12 *fff* *fff* *fff*

13 *fff* *fff* *fff*

3/4

Berlioz - Romeo & Juliet

Corno III.

3.

La Reine Mab ou la Fée des Songes.

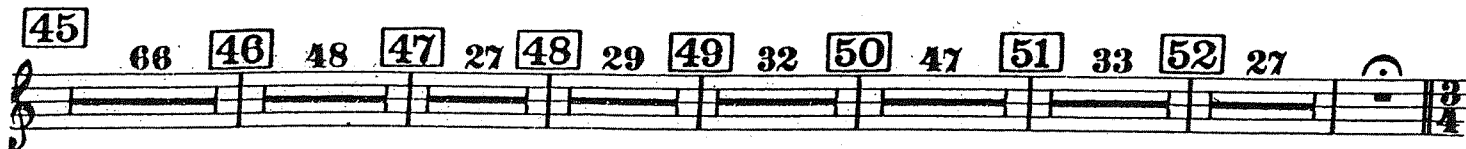
Königin Mab oder die Fee der Träume.

Queen Mab or the Fairy of Dreams.

in hoch B (Sib' alto.)

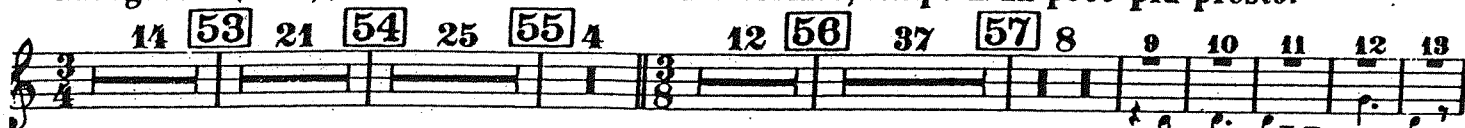
Scherzo.

Prestissimo. (♩=138)



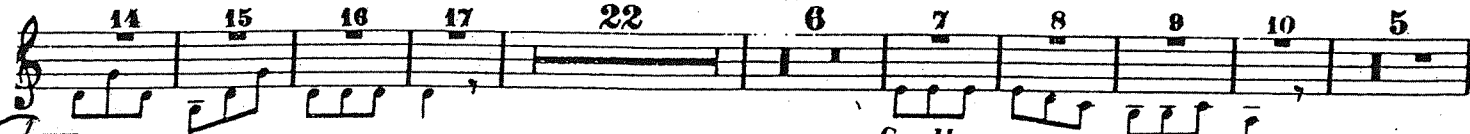
Allegretto. (♩=138) (♩=♩)

Prestissimo, tempo I. un poco più presto.

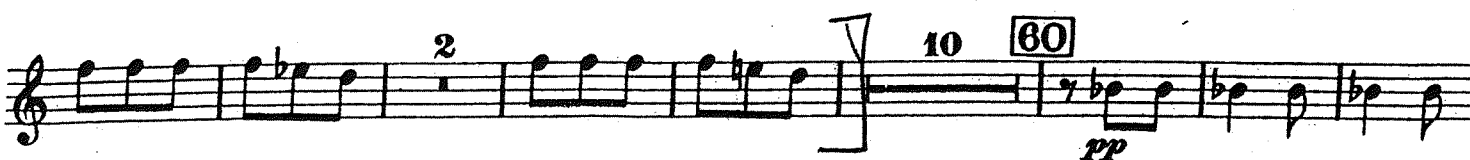
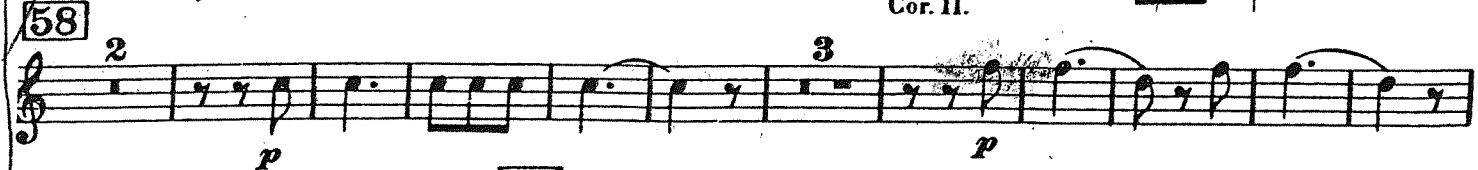


Cor. IV.

Cor. I.



Cor. II.



cresc. poco a poco



Concerto for Piano no. 1

Horn III

Johannes Brahms

in B basso
Maestoso

199 (Solo) *p marc. ma dolce*

208 Horn IV (Solo) *p marc. ma dolce*

214 Tutti *pp* **C³** Tempo I 6 3 Pk Horn I Trp. *ff*

in B Solo basso

32 **C⁴** Tutti 8 Solo 15 **D** 19 13 **E** 31 **E¹** Tutti 4

45 Solo 3 Tutti 4 Solo 3 **F** 11 Vc., Kb. 5 Tutti 2 Solo 7

61 Poco più moderato Klav. **G** Tutti *pp* 3

Tempo I poco più animato Klav. Solo 35 7 Tutti 2 Viol. 8 Kl. 8

f Solo 4 *f* 2

11 Horn I, II *ff*

Concerto for Piano no. 2

Horn III

Johannes Brahms

in F

Allegro non troppo (M.M. ♩=92)

Tutti Solo

1 Hr. I Solo 1 4 18 A Tutti

32 *f* *ff* *f dim.*

41 *p* *dim.* 11 B Viol. Br. 4 *f*

62 *marc.* 2 Solo 8 (Solo) 1 *f*

82 3 2 C Tutti 6 Solo *f* *mf* *p dim.* 4

104 3 Tutti Solo 4 D Tutti (Solo) *p dolce* *p* *p*

120 6 6 6 3 Solo 9 Klar. E *p stacc.* *p dolce*

138 Tutti 3 Solo 22 Fl. 2 Fag. I *mf* *dim.*

174 F Tutti 1 *ff marc.* 1

184 3 (Solo) Solo *f* Tutti Solo Tutti *p*

195 Solo 6 G 30 Bri. Fag. I *ff* *ff* *ff*

238 H 4 Tutti Solo 9 I 10 Tutti Solo *f* *ff dim. pp* *ff* *ff dim. pp* 3 3

BRAMMS: PIANO CONCERTO No.2

Horn III

Mvt. 2

2

8 Klav. Tutti (Solo) Solo 1 **K** Tutti 8 Solo 7 **L** 23

2

4 **M** Bässe 17 **N** Hr. I 5

12 5 3 **O** 1 3

18 8 Tpt. Hr. I pp ff

in D

Allegro appassionato (M. M. J. = 76)

Solo 2 mf

24 Str. Tutti 11 Solo 28 **A** Br. 8

Viol. I pizz. 11 1. 6 2. Br. Viol. I Solo 30 **B** Viol. f

10 Hbl. Tutti Solo ff f

C Tutti ff sf sf sf

1 1

(Solo) largamente f ben marc.

13 Klav. Tutti (Solo) p

Symphony no. 4

Horn III in C

Johannes Brahms

Allegro non troppo

Viol.

12 *p* *f* *p* **A** 3

25 *cresc. poco a poco* **B** 13 Viol.

47 *f* *f marc.*

55 **C**

63

72 *f marc.* *sf* *sf* *sf* *sf* 1

79 *sf* *mf* *cresc.* *f* **D** 6 9

102 Hr. I *pp* **E** 12 Hr. I II

124 Fl. I *f* **F** 8

142 *p* *p* *dolce* **G** 8

BRAMHMS SYMPHONY No. 4, excerpt 2

Horn III in C

2 Klar. Fag. Ob. Fag.

165 *f marc. sempre*

173

181 *fpp* H 8 Ob. Fag. I

200 *p* 3 I *ff* 1 *f molto marc.*

211

219 Klar. I 6 K 1 1 1 1 1 1 *p dolce* *dim.*

37 2 1 3 L *pp* *pp* Fag. I *pp*

15 *p*

7 *p* 2 *f* 3 *p* *cresc.* *f*

2 *f* 2 1 1 *f*

10 Viol. *f*

f marc. *sf* *sf* *sf* *sf* *sf* *sf* 1 3 3

7 N *sf* *f* 3 3

Symphony no. 9

(e minor, op. 95 "From the New World")

Horn III

Antonín Dvořák

Adagio.
3/8 in C.

9 *fz* *pp* *p* *f* *1*

p *f* *f* *f* *1* *allacca*

Allegro molto.
2/4

mf *f* *f* *8* *f* *ff* *1*

ff *6* *ff* *1*

fz *ff* *ff* *ff* *ff* *ff*

ff *1* *1* *2* *10* *Clar.* *ff* *3* *pp* *ff* *ff*

Viol. I. *18* *4* *24* *f* *dim.*

Viol. I. *5* *20* *ff* *1.* *2*

6 *2.* *2* *23* *7 Trombo.* *3* *ff*

3 *ff* *dim.* *fz* *3*

4 *8* *ff* *fz* *4* *ff*

fz *fz* *ff* *fz* *ff* *7*

fz *p* *pp*

Mahler — Symphony No. 3 in D Minor

3. Horn in F.

28

ff

5 *ff*

3 *rit.*

29 *allegro* *3*

fff mit höchster Kraft.

rubato

nicht breit.

30 *sempre ff*

aufgehob. Schalltr.

31 gestopft.

accel. *a tempo* *mf* *dim.* *p* *pp* *ff*

gest. *ff* *fff* *fff* *fff* *ff* *fff* mit höchster Kraftentfaltung.

offen

32

Vorwärts.

accel. *dim.*

Zeit lassen.

5 33 3 3 1 1 1 1 1 *rit.* *Etwas drängend.*

24 Wieder a Tempo. Nicht eilen. 10 35 8 36 9 37 10 38 10 39 (1. Horn)

Etwas wuchtiger. Immer dasselbe Tempo. 7 44 1

(Colli u. Bässe) *f*

ff

1 45 8

46

Mendelssohn — Symphony No. 3

CORNO III

488 *p* — *ff* *dim.* *cresc.* — *ff* *dim.* *cresc.* *ff*

482 **Assai animato** *ff*

490 *ff*

499 *P* *ff* *p* *attacca*

Andante come I

in F
Vivace non troppo

4 24 15

50

57

66 *pp*

B 20 **C** 4

96 *p* *cresc.*

1 3

109 *f* *ff*

cresc.

121 *p*

D 13

143 *f*

cresc. **E** 8

Mendelssohn — Symphony No. 3

ex. 2

CORNO III

4

160 *p* *dim.*

171 *mf cresc.* *p cresc.*

191 *ff*

198 *ff*

208 *ff*

217 *sempre ff*

225 *ff* *p*

242 *pp dim.* *pp* *pp*

265 *p* *pp* *attacca*

in D
Adagio $\text{♩} = 76$

9 A 24 B 8

46 *più f* *ff* *f* *dim.* *p*

67 *cresc.* *ff* *cantabile* *f*

76 *dim.* *p* *f* *dim.*

95 *cresc.* *dim.*

Mendelssohn — Symphony No. 3

CORNO III

ex. 3

IND.

4

IND.

67 *cresc.* **D** *ff*

76 *dim.* *p* *cantabile* *f* *dim.*

95 *cresc.* *dim.*

94 *p* **1 E** *pp* *pcresc.* *f* *ff* **3**

107 *f* *piu f* *ff* **F** **1**

116 *ff* *dim.* *p* **1** *p* *p* **G** **1** *p* **2**

131 *cresc.* *p* **H** *p* *dim.* **6** *p cresc.* **3** *attacca*

Horn III in F.

gestopft. 1 *fff* *ff* 26 *pp* leichtfertig
offen.

9 *pp* schnell und schattenhaft *mf* *dim.* *poco rit.* etwas gemächlicher *pp* *zurück* *p*

28 *p* *sart* 6

allmählich lebhafter H. I. *cresc.* Volles Zeitmass. in D. *p*

29 *mf* *marcato* *fp* *mf* *fp* in F.

30 *f* *mf*

31 *ff* *molto marcato* *ff* *ff* *ff*

3 *ff*